

# The Bridgewater Tree Committee Progress Report, February 17, 2026



# Tree Committee Members

2

## Voting Members

Shirley Krasinsky

Nicole Holmes

Pat Neary


Steve Dempsey (Arborist)

Ray Ajemian

## Non-Voting Members

Paul DeCosta (Highway)

Brian McMahnnon (Tree  
Warden)



Mission: The mission of the tree committee is to ensure that the Town can apply a consistent tree care and planting policy across the town in a manner which reflects best practices state-wide. The committee shall recommend draft policies to the Town Manager for adoption by the Department of Public Works.

# The Common

4



*THE COMMON, -CENTRAL SQUARE, BRIDGEWATER, MASS.*

# Broad St. c. 1900

5



BROAD ST., MEDFORD, MASS.

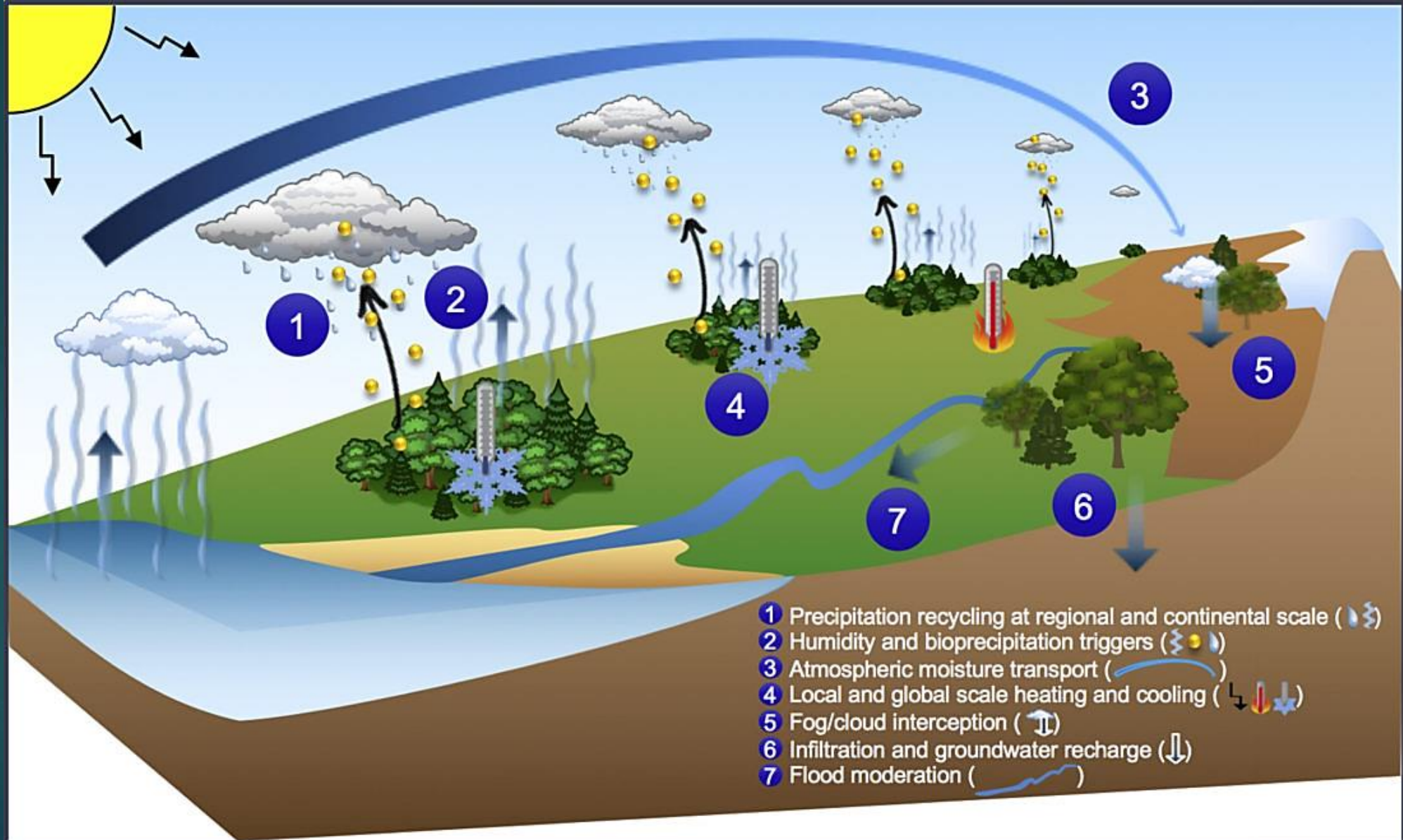
# The Importance of Trees

6

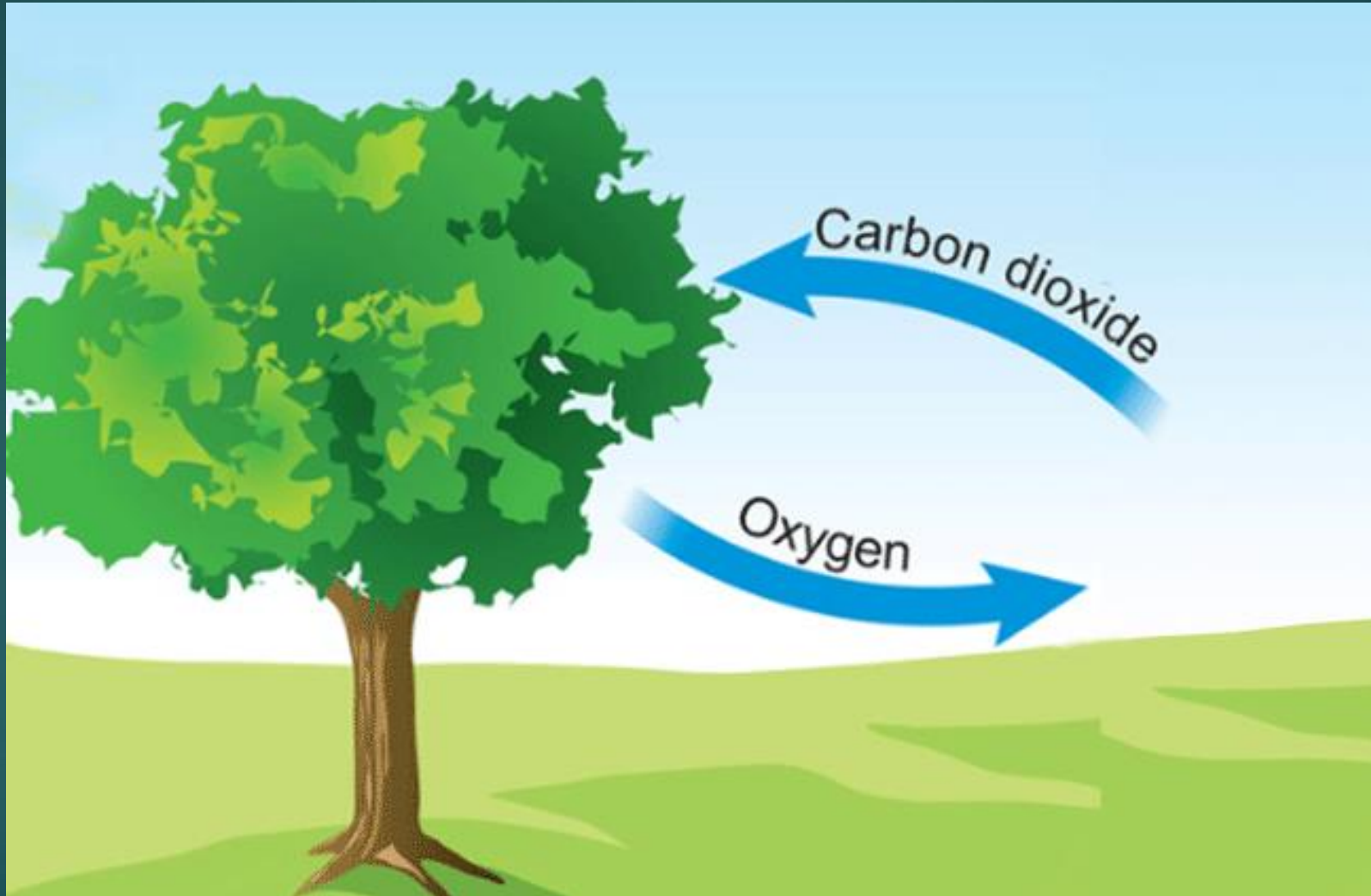


# Trees Help Regulate the Climate

7



# Clean Air



# How Trees Benefit Water

Shade helps keep  
water/streams  
cooler

Filter pollutants  
before they reach  
water

Reduce flooding &  
flood damage

Stabilize stream  
banks reducing  
erosion

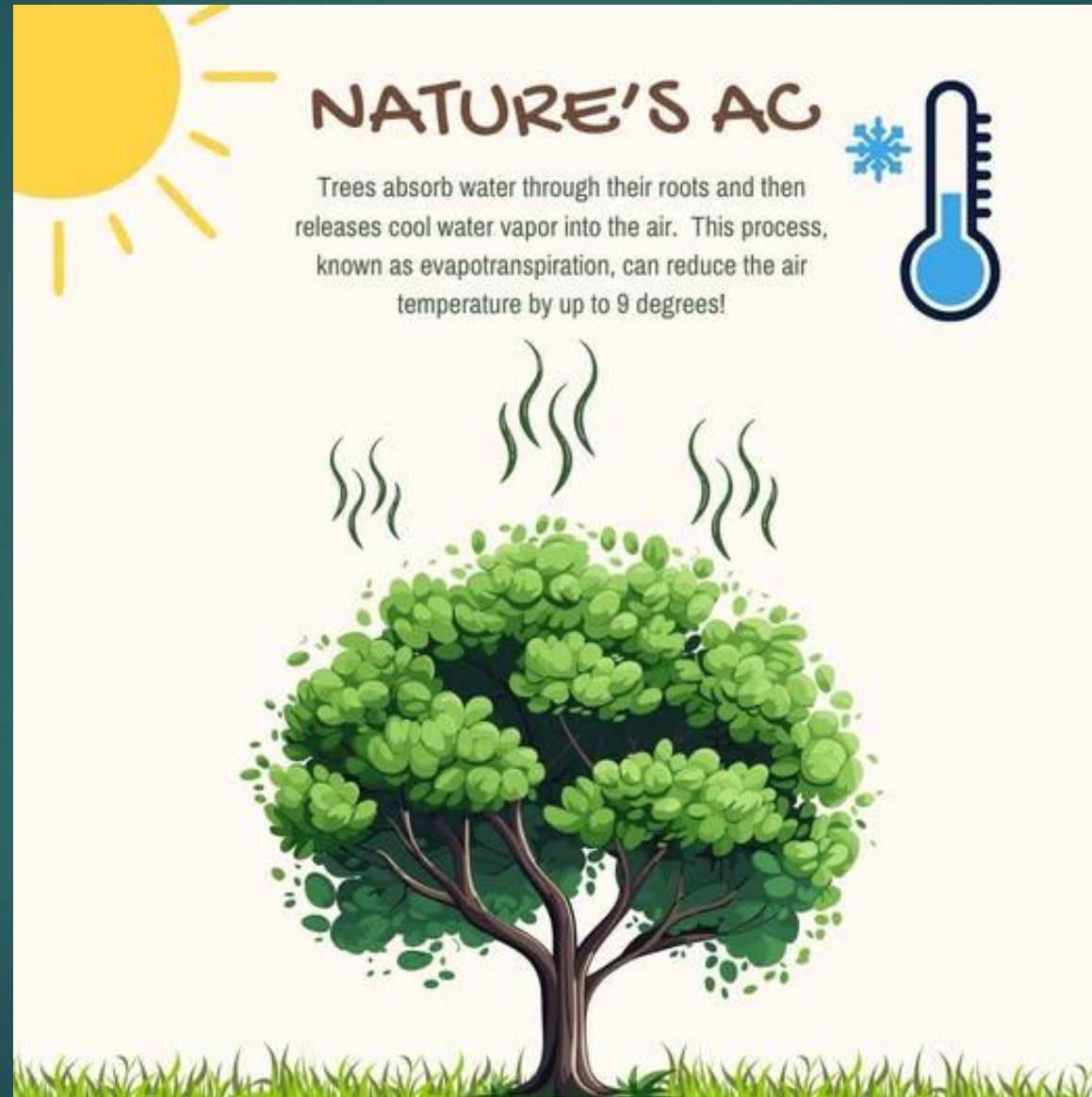


# Trees Help Prevent Soil Erosion

10



# Trees Can Help Cool the Air



# Trees Benefit Wildlife

12



# Trees Can Increase Property Values

13









# Trees Help Buffer Noise

17



# Plain St.

18



# Trees Can Help Strengthen Community Ties

19



# Carver's Pond

20





# Stanley Iron Works Park



# Stiles & Hart

# Wyman Farms

23



# Great River Preserve

24





**W I L D L A N D S**  
**T R U S T**





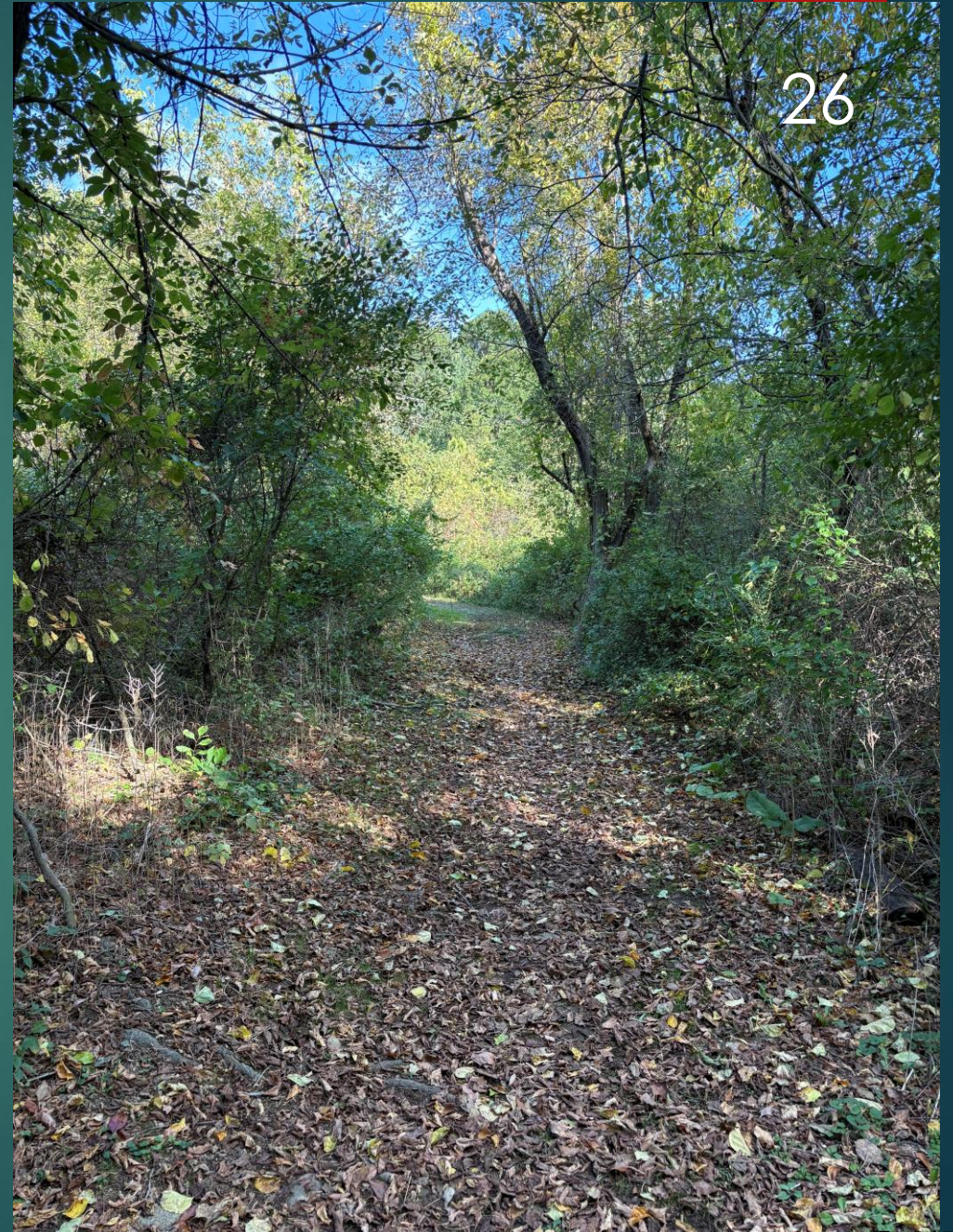
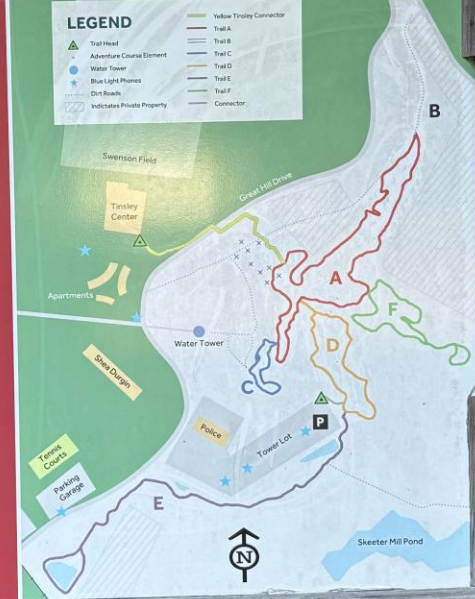
# GREAT HILL TRAILS

### TRAIL USAGE GUIDELINES

- Use at your own risk
- Open dawn to dusk
- Stay on assigned trails
- Use of buddy system is recommended
- Carry out what you carry in
- Be considerate of abutting neighbors
- Remove pet waste from trails
- Bicyclists should avoid skidding or startling trail users

### STRICTLY PROHIBITED

- Use of Adventure Course elements
- All motorized vehicles
- Destruction or removal of vegetation, animals, structures, artifacts or other BSU property
- Groups of 20 or more
- Pets, except on a leash
- Hunting or trapping
- Camping and open fires
- Alcoholic beverages



# Middleboro Town Forest

27



# Tree Committee Accomplishments

28

- Arbor Day Celebrations
- Tree Plantings
- Tree City Designation
- Public Forum
- Proposed update to Shade Tree Ordinance
- Proposed tree mitigation schedule
- Updated Tree List for Planning Board

# Williams Intermediate School Arbor Day, 2024





**TREE CITY USA<sup>®</sup>**

An Arbor Day Foundation Program

John

**Bridgewater**  
is a proud  
**Tree City USA<sup>®</sup>**  
community



**TREE CITY USA<sup>®</sup>**  
An Arbor Day Foundation Program





# Main Street Plantings



# Broad Street Plantings



# Senior Center Tree Planting (2024)

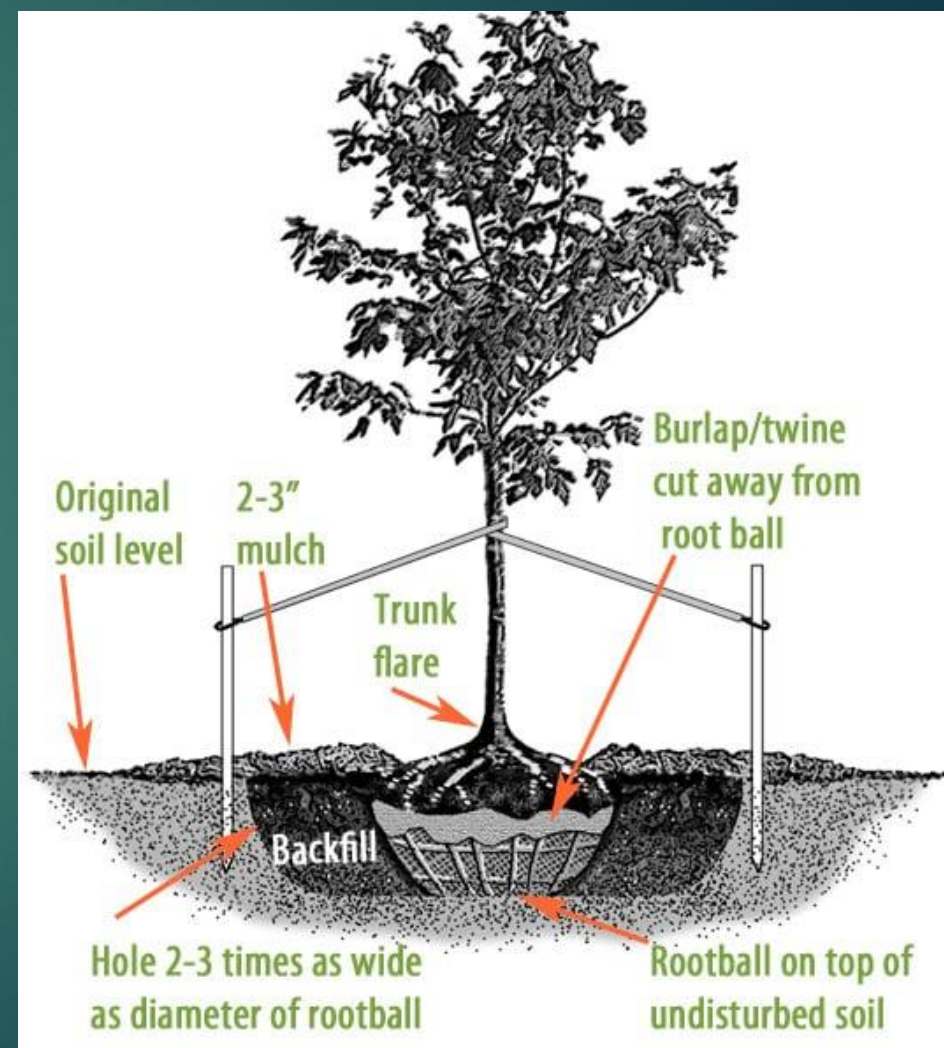
# Educating the Public on Trees

# Tree Forums at the Library, 2023/4/5



# The Planting and Care of Trees

- Trees of New England
- Invasive trees
- How to plant and care



# TREE COMMITTEE GOALS

38

- Tree Warden
- Arborist on the committee
- Tree Survey
- Established Budget
- Forestry Department/Bucket Truck
- Public Education Venue



A complete inventory can help:

- Improve work-scheduling and cyclical maintenance
- Improve the ability to respond to storm damage and estimate costs
- Enhance efficiency when responding to constituent requests
- Locate all trees of a single species; for example, to aid in planning for and responding to a pest or disease outbreak

# Cooperation

# The Bridgewater Improvement Association

# Summer St. Cemetary

42



# Pleasant St. Plantings

43



# Bridgewater Statutes Related to Trees

# Town of Bridgewater Zoning Ordinance Revision May 23, 2024

## C. Site Development Standards.

1. Land Disturbance. Site/building design shall preserve natural topography outside of the development footprint to reduce unnecessary land disturbance and to preserve natural drainage on the site

2. Replication. Clearing of vegetation and alteration of topography shall be replicated with native vegetation planted in disturbed areas as needed to enhance or restore wildlife habitat. As mitigation for tree removal, an applicant may be required to make an appropriate payment in lieu as a condition of any special permit or site plan approval.

# Town Code

Chapter 290, Shade Trees

Article 1, Pages 261 -263

# Rules and Regulations Governing the Subdivision of Land in The Town of Bridgewater, MA

## Section V Required Improvements

TREE CUTTING AND PLANTING PLAN- A plan to accompany definitive subdivision plans which shall be designed to protect large or significant trees, promote public safety, and enhance the privacy of the residents and neighbors of the subdivision. Said plan shall be stamped by a Registered Landscape Architect.

# Section V Required Improvements

Section 21, Page 65 - Street Trees

Proposed Update to Chapter 290, Shade Trees

Proposed Tree Mitigation Schedule





# Main Street Plantings



# TREE COMMITTEE GOALS

56

- Tree Warden
- Arborist on the committee
- Tree Survey
- Established Budget
- Forestry Department/Bucket Truck
- Public Education Venue

“The best time to plant a tree was 20 years ago. The second best time is now.”

— *Chinese proverb*

# What does the Tree Warden do?

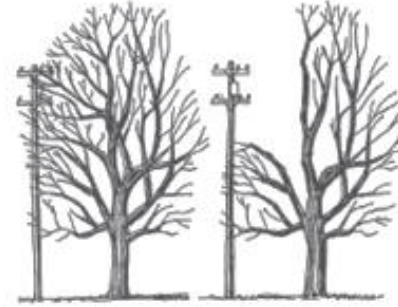
- ▶ Manages and maintains public trees, protecting community canopy, according to MGL CH 87
- ▶ Deputizes others and issues permits to prune or remove trees as needed.
- ▶ Implements care and safety plans, oversees planting, pruning, removal
- ▶ Monitors for hazardous trees, disease and insect problems

# National Grid and Trees

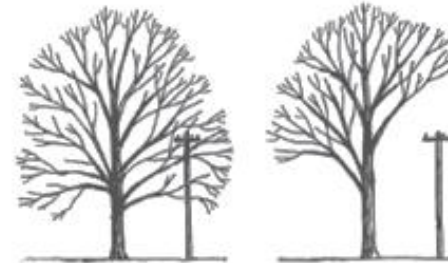
59



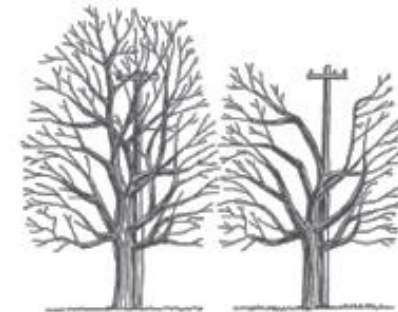
**Side Pruning**



**Under Pruning**



**Through Pruning**



# There are many challenges for roadside trees.

- ▶ Disease outbreaks
- ▶ Insect pests
- ▶ Vehicle accidents
- ▶ Storm and weather damage
- ▶ Heat, drought and pollution
- ▶ Construction and vandalism
- ▶ Limited space for growth

# There are many challenges for roadside trees.

- ▶ Disease outbreaks
- ▶ Insect pests
- ▶ Vehicle accidents
- ▶ Storm and weather damage
- ▶ Heat, drought and pollution
- ▶ Construction and vandalism
- ▶ Limited space for growth

# Bridgewater Central Square

- ▶ Established 1656,  
community hub
- ▶ Home to many  
mature trees
- ▶ Challenges:
  - beech leaf  
disease
  - urban  
environment
  - traffic

Image: Kenneth C. Zirkel wiki commons  
[https://commons.wikimedia.org/wiki/File:Bridge\\_water\\_Central\\_Square,\\_Massachusetts.jpg](https://commons.wikimedia.org/wiki/File:Bridge_water_Central_Square,_Massachusetts.jpg)



# Common Street Trees in Massachusetts

- ▶ 1. Northern Red Oak, *Quercus rubra*
- ▶ 2. Norway Maple, *Acer platanoides*
- ▶ 3. Swamp Red Maple, *Acer rubrum*
- ▶ 4. Green Ash, *Fraxinus pennsylvanica*
- ▶ 5. Honey Locust, *Gleditsia triacanthos*
- ▶ 6. Scholar Tree, *Styphnolobium japonicum*
- ▶ 7. London Plane, *Platanus x acerfolia*
- ▶ 8. Ginkgo, *Ginkgo biloba*

# Northern Red Oak, *Quercus rubra*



- Native to upland woodlands
- Adaptable to a wide range of soils
- Grows to 85 feet
- Acorns are a food source for wildlife
- Threatened by Oak Wilt

# Norway Maple, *Acer platanoides*



- Native to Eastern Europe
- Grows to 85 ft tall
- Dense root system that inhibits understory plants
- Listed as an invasive plant in Massachusetts
- Subject to Tar Spot, a leaf disease

# Swamp Red Maple, *Acer rubrum*



- Native species, Grows in flood planes but adapts to a wide range of conditions
- Striking fall foliage and small red flowers in April
- Not tolerant of wounds, poor compartmentation of injuries, drought sensitive

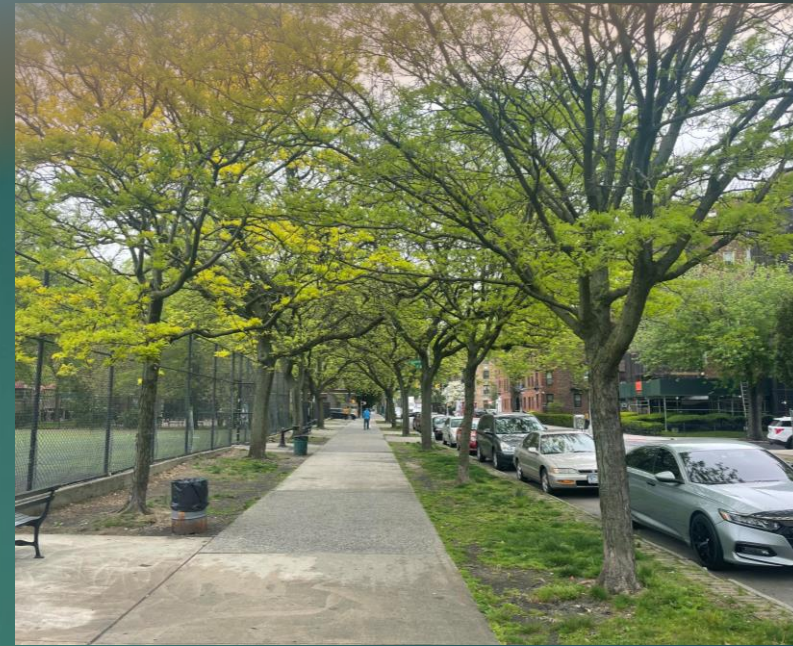
# Green Ash, *Fraxinus pennsylvanica*



- Native species, adapted to the flood plane but tolerates a wide range of conditions
- Grows to 80 feet
- Widely planted as a street tree
- Tolerant of drought, heat, poor soils
- No resistance to Emerald Ash Borer which is killing all of them
- Treatment are not practical for street trees

# Honey Locust, *Gleditsia triacanthos*

- ▶ Native to the middle Atlantic States
- ▶ Grow along river bottoms
- ▶ Tolerant of pollution and city conditions
- ▶ Wild types grow in dense thickets.
- ▶ They have large thorns and produce long pods filled with beans that are a source of food for wildlife.
- ▶ Cultivars used as street trees are thorn less and seedless.
- ▶ They have a tendency to produce suckers from surface roots and can be 'weedy'



# Scholar Tree, *Styphnolobium japonicum*



- Native to China
- Grow to 50 feet
- Produce white flowers in late summer
- Tolerant of urban conditions
- Disease and insect free
- Used in Chinese herbal

# London Plane, *Platanus x acerfolia*



Hybrid that is resistant to anthracnose disease which affects native sycamore  
Adapted to flood plains but tolerant urban conditions and compacted soils.  
Commonly known as buttonwood for the seed pods it produces

# Maidenhair Tree, *Ginkgo biloba*



Ancient lineage, predates flowering plants, first appeared 260 million years ago

Renowned for its fall foliage. Leaves are a common motif in textiles and jewelry

Fruit, born on female trees is prized in Asian cuisine

No insect or disease problems

# Japanese Knotweed, *Reynoutria japonica*



- 
- 
- 
- 
- In the United Kingdom inspection for Knotweed is a requirement for a prepurchase home inspection. Banks do not issue mortgages if Knotweed is present.
- A lawsuit was filed by homeowners in Pepperell, Massachusetts against a contractor for using fill contaminated with Knotweed. They were awarded \$300K.. The awarded was upheld on appeal establishing a president for Knotweed contamination in Massachusetts.

Thank You – Questions?